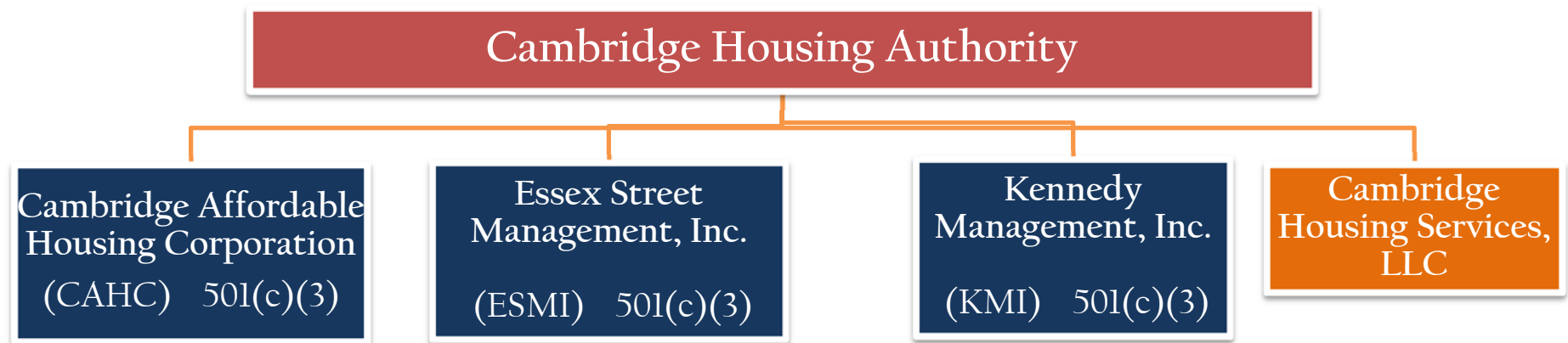


# CAMBRIDGE HOUSING AUTHORITY AND AFFILIATE ORGANIZATIONS



Owns: 84 Units

26 Condo units  
 6 Ashton Place - 6 units  
 217 Western Ave. - 6 units  
 195 Prospect St. - 20 units  
 78-80 Porter Road - 26 units

*Acts as mgr./developer of:*  
 New Temple Place, LLC - 40 units  
 New Temple Place Manager, LLC

Jefferson Park Apartments LLC - 104 units  
 Jefferson Park Apartments Manager LLC

CAHC YWCA, LLC  
 Friendly entity for historic Y  
 (Non-managing member of CYW  
 Properties, LLC)

Millers River Holding LLC - 297 units  
 Millers River Holding Manager LLC

Owns: 22 Units

14 Condo units  
 22 Lopez Avenue - 8 units

*Acts as mgr./developer of:*  
 Cambridge Affordable Pres. Apts, LLC -  
 115 units (JG - all RAD, LW -53 RAD)  
 Presidential Manager, LLC

Lyndon B. Johnson Apts., LLC - 177 units  
 Lyndon B. Johnson Manager, LLC

Putnam Gardens, LLC - 122 units  
 CHA RAD I Manager, LLC

Woodrow Wilson Court, LLC - 68 units  
 CHA RAD I Manager, LLC

Washington Elms, LLC - 175 units  
 CHA RAD I Manager, LLC

Newtowne Court, LLC - 268 units  
 CHA RAD I Manager, LLC

Manning Apartments, LLC - 198 units  
 CHA RAD I Manager LLC

*Acts as manager of:*

Lancaster St. Apartments, LLC - 65 units  
 JFK Apartments, LLC - 69 units (44 RAD)